



Churchfields News



Quality First
Education Trust

Churchfields Road, Beckenham, Kent, BR3 4QY Tel: 020 86505247

13th September 2024

Points to note:

- In this newsletter, you will find dates for:
 - Term dates for 2024/25
 - Class assemblies
 - Parent/carer evenings
 - Open classroom sessions
 - Sports days
 - Special events

- Upcoming meetings and events:
 - Monday 16th September
 - Swimming lessons begin for ARC Holly, ARC Magnolia and Year 4 Sycamore classes
 - Wednesday 18th September
 - Inclusion coffee morning 9 – 10am
 - Monday 23rd September
 - Year 2 trip to the Tower of London
 - Tuesday 24th September
 - How we teach maths workshop – for parents/carers of children in Reception to Year 6
 - In person, 2pm in the Main Hall at school
 - Online, 5.30pm on Zoom (see separate email for link)
 - Monday 30th September
 - Year 6 Open Classrooms – 2.45pm
 - Thursday 3rd October
 - Year 5 Open Classrooms – 2.45pm

Churchfields Tours

Secondary School Open Days

Do you or a friend, family member or neighbour have a child starting Nursery or Reception in September 2025 or looking for a school place in Years 1 - 6?

We have a number of tour dates available as well as our virtual tour video on our website [here](#) . We can also offer individual tours as necessary. Help us spread the word about our school!

Secondary schools tend to only offer open days and tours this half term.

If your child is in Year 6 (and we would also recommend visiting schools in Year 5 as well), you can find the Bromley state schools and application information [here](#) - each school will also have details of open days/tours on their websites. Do take your child with you to have a look – if you can, please bring them in to school to register and then sign them out to keep their attendance up!



Class Assemblies 2024/25

Class assemblies will be held in the school's Main Hall, starting promptly at 2.45pm.

Autumn Term

19.11.24 Year 6 Elm
26.11.24 Year 6 Oak

Spring Term

14.01.25 Year 5 Olive
21.01.25 Year 5 Cypress
28.01.25 Year 5 Cherry
04.02.25 Year 4 Aspen
04.03.25 Year 4 Hazel
11.03.25 Year 4 Sycamore
18.03.25 Year 3 Poplar
25.03.25 Year 3 Sumac

Summer Term

06.05.25 Year 2 Hickory
13.05.25 Year 2 Maple
10.06.25 Year 1 Rowan
17.06.25 Year 1 Silver Birch
24.06.25 Reception Palm
01.07.25 Reception Beech

Open Classrooms 2024/25

Come along to the classroom at 2.45pm so the children can show off their learning and work.

Autumn Term

30.09.24 Year 6
03.10.24 Year 5
07.10.24 Year 3
08.10.24 Year 4
14.10.24 Year 1
16.10.24 Year 2
22.10.24 Reception

Spring term

22.01.25 Reception
27.01.25 Year 1
29.01.25 Year 2
30.01.25 Year 3
03.02.25 Year 5
05.02.25 Year 4
06.02.25 Year 6

Summer Term

05.06.25 Year 6
09.06.25 Reception
12.06.25 Year 1
16.06.25 Year 2
18.06.25 Year 3
19.06.25 Year 4
23.06.25 Year 5

Apple class, ARC Holly and ARC Magnolia will write to you separately about when the children will share their learning with you.

Parent/Carer Evenings 2024/25

Autumn term

Wednesday 23rd October, 3.45 – 6.30pm
Thursday 24th October, 3.45 – 6.30pm

Spring term

Wednesday 12th February, 3.45 – 6.30pm
Thursday 13th February, 3.45 – 6.30pm

Summer term

Wednesday 16th July, 3.45 – 5.30pm

Please note – in the summer term you will receive your child's end of year report before the parent/carers evening.

Special Events 2024/25

- Christmas concerts:
 - Reception: Tuesday 17th December, 9.30am in Main Hall at school
 - Years 1, 2, 3: Monday 16th December, 2pm at St Michael's Church
 - Years 4, 5, 6: Tuesday 17th December, 2pm at St Michael's Church
- World Book day: Thursday 6th March
- Churchfields Culture Celebration Week: Monday 31st March – Friday 4th April
- Sports days on school field:
 - Reception, Year 1, Year 2 and ARC Holly on Friday 23rd May, 9 – 11am
 - Year 3, Year 4, Year 5, Year 6 and ARC Magnolia on Friday 13th June, 9 – 11am



Message from the Headteacher

Dear Parents and Carers,

It has been another incredibly positive start to a new school year and a real pleasure to see you again after the long summer break. Our new children joining Nursery, Reception and the ARC have made a great start and we welcome all of our new families and staff to the Churchfields community.

We had two excellent training days for staff last week, one with the whole of the Quality First Education Trust and one as a school team. We are all united and enthused about our core aim of providing an 'Excellent education for all' and are well placed as a school and a trust to become even better this year in what we can offer your children.

We will be embedding our improvements last year in phonics, reading, ARC, behaviour and support for children as well as working on new goals. Our goals for 2024/25 include: developing and retaining all of our excellent staff; improving attendance and punctuality; making sure every aspect of our curriculum and provision is excellent; further developing our anti-bullying approach and supporting the range of children's needs even more effectively.

One of the greatest strengths of our school is its community of children, families and staff – we want to offer more opportunities for us to work together to benefit the children and the school as you will see below. We have also put as many dates as possible to allow you to plan ahead as well as reminders about communications, routines and so on which I hope you find helpful.

Wishing you a relaxing weekend,
Sarah Atherton
Headteacher

Workshops	Coffee Mornings	Parent/Carer Forums
<p><i>Find out how we teach and how you can support your child to succeed.</i></p> <p>Learning to read with phonics for Reception, Year 1, Year 2 24.09.24 - 9.15am at school</p> <p>How we teach maths 01.10.24 – 2pm at school and 5.30pm on Zoom</p> <p>Reading beyond phonics (Years 3 – 6) 15.10.24 - 9.15am at school</p>	<p><i>Informal meetings with a range of leaders and guest speakers – at school, 9am.</i></p> <p>Inclusion/SEND - 16.10.24 27.11.24</p> <p>ARC 02.10.24 (with Monique, speech and language therapist) 11.12.24</p> <p>Early Years (Nursery and Reception) 13.11.24 15.12.25</p>	<p><i>Ask questions and share your views in an informal meeting with the Headteacher at school.</i></p> <p>Open forum – any topic 04.10.24, 9am 25.11.24, 2pm 24.01.25, 9am</p> <p>Inclusion/SEND forum 10.10.24, 9am 18.11.24, 2pm 29.01.25, 9am</p>

With all of our busy lives, we know it's not possible to make all meetings available to all parents/carers – we aim to provide the content on our website and/or provide a summary in the next newsletter if you cannot attend.

We also regularly send surveys to families so you can share your views and ideas.



Communication and Working Together

Who to talk to in school – questions, concerns, support

Most conversations about your child will be with the **class teacher in the first instance**. If you need to contact the teacher you can speak with them directly on the playground at the start and end of day, call the office and a message will be passed on or email the class email address found on the year group pages [here](#).

We also have a number of **senior staff** who have wider responsibilities in school, who are out on the playgrounds every day to speak with and they can also be contacted by calling/emailing the office.

Important note on email to teachers:

We want to have good communication with you but we don't expect (and we think you wouldn't want) your child's teachers to be checking their email throughout the day when they are preparing, teaching or trying to grab a much-needed lunch break. Similarly, an email sent late at night will not necessarily be resolved/responded to by the start of the next day.

We do our best to be available for all parents /carers and aim to respond in a reasonable timeframe given the commitments of teachers and staff during a busy teaching day/week.

If you are reporting your child's **absence**, call the office or email attendance@churchfields.q1e.org.uk.

If you are **changing who is picking up your child** from the usual arrangement, please email the office admin@churchfields.q1e.org.uk **before 2.30pm** and they can pass the message on - the teacher will likely not see an email sent during the day.

Polite Reminder – If there's a problem . . .

We do understand that when you are worried about your child or something that is happening in school it can be an emotional and difficult time for you as parents/carers.

Our staff are available to listen to you and to help as much as we can by working as partners together. On (thankfully) rare occasions, we have needed to remind parent/carers about our expectations of their communication and behaviour.

We ask that you remember to:

- **never confront someone else's child about an issue** - either on site or in the local area - let school know what is worrying you and let us handle the problem.
- **avoid conflict/confrontation with other parents/carers at school and school events** – this makes children and the community feel unsafe. Staff are on hand to hear any concerns and often problems escalate when they are not reported to us in the first instance.
- **treat our staff politely and with respect** – we may need to end conversations that are aggressive, demeaning or discriminatory. Please think carefully about the content and wording of emails sent to staff when you are upset.
- **be careful about what is posted on WhatsApp groups or similar** – negative/personal comments about children, families or staff are rarely useful in resolving issues but often damage relationships.



Churchfields News

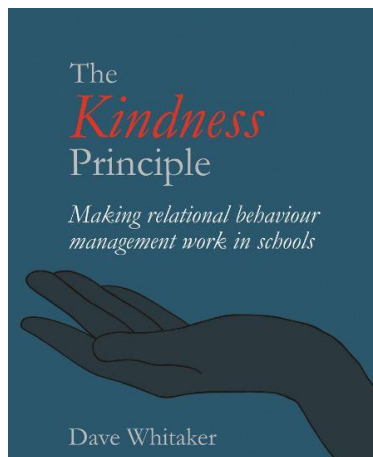
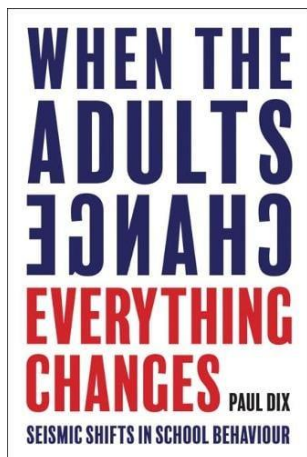


Quality First
Education Trust


Churchfields Road, Beckenham, Kent, BR3 4QY Tel: 020 86505247

Our approach to support children's behaviour and emotional development

Our behaviour policy guides staff to teach children the self-discipline to make the right choices and aims to build a community which values kindness, care, good humour, good temper, belonging and empathy for others. We based much of the policy on two books:



You can find the full policy on our school website <https://www.churchfields-q1e.org.uk/our-school/policies> and there is a quick summary below.

Following the Golden Rules is expected from everyone	We celebrate going 'above and beyond'	We respond and repair any negative behaviour
 <p>The Golden Rules</p> <div style="border: 1px solid black; padding: 5px; text-align: center;"> <p>Ready</p> <p>Respectful</p> <p>Safe</p> </div> <p>We expect ready, respectful and safe choices from all children and we recognise and praise their efforts to follow the golden rules.</p> <p>We focus our time, energy and attention on appreciating the right choices, not looking for the wrong ones.</p>	<p>We recognise and reward learners who go 'above and beyond' our expected standards with:</p> <ul style="list-style-type: none"> - Praise and attention (frequently) - Names on the recognition board (daily) - Note or sticker home so others can praise them (regularly) - Phonecall home/ praise conversation with you (occasionally) - Celebration assembly/class meetings (weekly) 	<p>When children are not showing ready, respectful or safe behaviour, staff are ready to deliver consequences calmly and with care.</p> <p>This may be a non-verbal 'nudge', a reminder, a warning, time to think or a change of space. The swiftness and certainty of response is more effective than escalation of response.</p> <p>For repeated, serious or extreme behaviours we work with parents/carers to help the child improve.</p>

Want to find out how you could use this at home?

Have a look at <https://www.whentheparentschange.com/> which has links, information and support, including a parent/carers bookclub!



Lunchtimes, Water, Meals and Snacks



Cutlery and trays



Yoghurt, fresh fruit and dessert of the day



Salad bar



Hydration station

We have had an 'upgrade', as many children called it, in the servery for school meals this year. The biggest hit is the 'hydration station' – the children are drinking 3-4 times as much water as they did previously!

The **current menu for school meals** is [here](#) and for **after school club tea** is [here](#). The menus will change after October half term and Harrisons have been working hard to respond to the feedback from their meetings with school council in the summer term.

Children should bring a **bottle of plain water** to school for during the day – please do not send children with juice, squash or water in energy drinks bottles e.g. Prime.

Nursery, Reception, Year 1 and Year 2 all have a free snack of fresh/dried fruit or vegetables each day provided by the school. Older children can bring a **snack for playtime of fresh or dried fruit or vegetable (e.g. carrot sticks)**. Please do not send other foods e.g. crisps, biscuits, sweets, chocolates, cereal bars, yoghurts etc.

We are a **nut-free school, this includes products containing nuts** e.g. Nutella, cereal bars, pesto often has cashews in it.



Churchfields News



Quality First
Education Trust

Churchfields Road, Beckenham, Kent, BR3 4QY Tel: 020 86505247

Drop off and pick up



	Where	Drop off	Lessons start	Pick up
Nursery (Apple)	Nursery Gate	8.55am doors open	9.05am	3.30pm
Reception	Palm and Beech doors on the office side of the building	8.50am doors open	9.00am	3.25pm
Year 1	Large playground	8.45am – children start to come inside guided by staff	9.00am	3.15pm
Year 2 and 3	Small playground	8.45am – teachers meet the lines, bell to go in at 8.50am	9.00am	3.15pm
Year 4, 5, 6	Large playground	8.45am – teachers meet the lines, bell to go in at 8.50am	9.00am	3.20pm
ARC Holly	Wraparound Care doors on the office side of the building	8.40 – 8.50am	9.00am	3.05 – 3.15pm
ARC Magnolia	Classroom door on the playground	8.40 – 8.50am	9.00am	3.05 – 3.15pm

We are encouraging good punctuality this year as children arriving after lessons start disturb the learning of the class and also find it tricky to come in when everyone else has started.

Please note

The school grounds will be open from 8.30am so that families don't have to wait on busy pathways and children can socialise/run off some energy; we ring the bell for families to leave the site at 3.30pm so that clubs and after school club can use the space.

Parents and carers are responsible for their children when on site until the drop off times and after they have been handed over to you.



Churchfields News



Quality First
Education Trust

Churchfields Road, Beckenham, Kent, BR3 4QY Tel: 020 86505247

Uniform



We want children to join together as one school community and to feel pride to belong to Churchfields.

Our school uniform is compulsory and has been designed to get the balance between looking smart and being practical for a busy, active day at primary school.

The complete uniform list is below:

- Red polo shirt
- Red cardigan or jumper
- Red fleece/coat
- Grey trousers, skirt or pinafore dress
- Red, grey or black tights/socks
- Red, grey or black hair accessories
- Black school shoes (no trainers)

Summer options:

- Red checked dresses
- Grey shorts
- Dark sandals suitable for school

PE kit:

- Navy blue shorts or tracksuit trousers,
- T-shirt in House colour (as advised by the class teacher), no football tops
- Trainers
- Sweatshirt in the winter (no hoodies)

Jewellery is not to be worn and your child will be required to remove any jewellery. If your child has pierced ears, only small, plain studs may be worn in school.

Uniform with the Churchfields logo is optional and can be purchased through [Price and Buckland's online uniform shop](#) .

PE and Forest School Kits



PE kits will be kept at school and sent home at the end of half term.

Forest School:

- Wellies stay at school
- Reception, Year 1, Year 3, Year 5 – come to school in Forest School clothes with uniform in a bag
- Nursery, Reception, ARC, Year 6 – come to school in uniform with Forest School clothes in bag

Forest School clothes are sent home each week as weather conditions change and they may be wet/muddy.

Reading Records



Your child has a new reading record for the year with a different design depending on their age.

Please send your child to school with this every day and make a note when you have read with them at home.

In school, the teacher will put a stamp when they have read with your child and any comments needed. If your child reads with a teaching assistant or reading volunteer, they will stamp the record to show they have read with an adult.



New: Friday Assemblies

We are starting a new way of coming together as a school on Fridays. As the Main Hall can't quite fit all of the children in at once, Reception to Year 6 will join together every fortnight in two families.

The families have been named after two famous people who grew up locally and have contributed to millions of children's lives with their work. On the alternate weeks, the children will have a class meeting to reflect on their week and how they can show our school values of Aspiration, Citizenship and Excellence.



Baroness Floella Benjamin

She is a Trinidadian-British actress, presenter, broadcaster and parliamentarian. She supports many charities including being the Vice President of Barnardo's and Patron of the Sickle Cell Society. She grew up in Beckenham from the age of 11.

Benjamin Family:

Magnolia, Palm, Silver Birch, Maple, Poplar, Hazel, Cherry, Olive, Oak



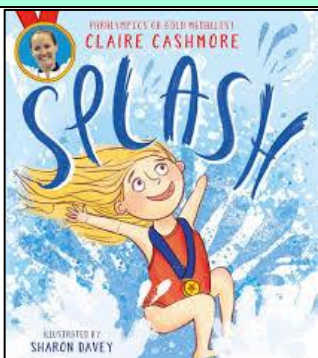
Malorie Blackman OBE

She is a British writer who held the position of Children's Laureate from 2013 to 2015. She has written over 70 books, mostly for children and young adults, and for television. She went to Churchfields Primary School as a child (on the original site).

Blackman Family:

Holly, Beech, Rowan, Hickory, Sumac, Aspen, Sycamore, Cypress, Elm

Assembly theme this week: Paralympics

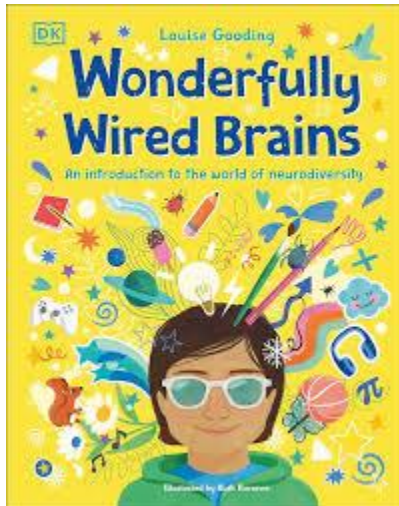


We learned about how the Paralympics started, the types of sports, some young GB Paralympians (aged 13 and 14) who won medals in Paris 2024 and about the inspirational stories of some para-athletes.

Next week's theme: UNESCO International Day of Literacy



Birthday Book Donations



Thank you and happy birthday to Ridley!



Happy birthday to Arthur and thank you for the book – great recommendation!

Book Suggestions

We really appreciate the birthday books that come into school to keep our libraries fresh and exciting – they can be new or one of your favourites from home.

Amazing Achievements



Congratulations to Maya who smashed the summer reading challenge at her library before the deadline. She has also raised nearly £500 over the holidays for Young Lives vs Cancer by where she had to walk/scoot/ride her bike for 1 mile a day (or 31 miles in total) – amazing citizenship!

Any good news, something to share or celebrate with the Churchfields community?

Please do email us on

admin@churchfields.q1e.org.uk



We are part of the Penge School Uniform Hub

Penge School Uniform Hub

Save money and the planet: buy preloved uniform!

**Sense charity shop,
104 High Street, Penge
(next to the Post Office)**

General uniform suitable for all schools available, as well as specifics for Alexandra, St John's and Churchfields Schools, with more coming soon!

Open Mon-Sat 9am-5pm,
Sun 10am-4pm

Organised by Alexandra Junior School PTFA.
For more info, contact: treasurer@ajsptfa.org.uk
Supported by Penge BID



Penge School Uniform Hub!

Pre-loved Churchfields school uniform in sizes age 2 to 15 is now available 7 days a week from the Sense charity shop on Penge High Street. 100s of items in stock - so much it won't all fit on the shop floor, so please ask if you cannot find the size you need. **Dresses, skirts, trousers, shorts, jumpers and cardigans all £1. Polos shirts 50p.** This new collaboration between Sense Penge and multiple local primary schools means that parents now have a single one-stop-shop to find affordable second-hand school uniform for their primary age children. All proceeds to the Sense charity.



Churchfields News



Quality First
Education Trust

Churchfields Road, Beckenham, Kent, BR3 4QY Tel: 020 86505247

Term Dates 2024/25

Autumn Term 2024	Monday 2nd September 2024	INSET – school closed to children
	Tuesday 3rd September 2024	INSET – school closed to children
	Wednesday 4 th September 2024	Children's first day back – Autumn 1
	Friday 25 th October 2024	Last day of Autumn 1
	Monday 28th October to Friday 1st November 2024	Half Term Holidays
	Monday 4th November 2024	INSET – school closed to children
	Tuesday 5 th November 2024	Children's first day back – Autumn 2
	Friday 20 th December 2024	Last day of Autumn 2
	Monday 23rd December 2024 to Friday 3rd January 2025	Holidays
Spring Term 2025	Monday 6th January 2025	INSET – school closed to children
	Tuesday 7 th January 2025	Children's first day back – Spring 1
	Friday 14 th February 2025	Last day of Spring 1
	Monday 17th to Friday 21st February 2025	Half Term Holidays
	Monday 24 th February 2025	Children's first day back – Spring 2
	Friday 4 th April 2025	Last day of Spring 2
	Monday 7th April to Monday 21st April 2025	Holidays
Summer Term 2025	Tuesday 22nd April 2025	INSET – school closed to children
	Wednesday 23 rd April 2025	Children's first day back – Summer 1
	Monday 5th May 2025	School closed – Bank Holiday
	Friday 23 rd May 2025	Last day of Summer 1
	Monday 26th to Friday 30th May 2025	Half Term Holidays
	Monday 2 nd June 2025	Children's first day back – Summer 2
	Tuesday 22 nd July 2025	Last day of Summer 2