



## Dates for your diary:

### Monday 23<sup>rd</sup> December to Monday 6<sup>th</sup> January

- School closed for holidays and INSET day
- On-site childcare available, bookings open now [CLICK HERE](#)

### Tuesday 7<sup>th</sup> January

- Children's first day of Spring 1 term, start at the usual times

### Friday 10<sup>th</sup> January

- Year 3 trip to Beckenham Place - Rocks and Soils workshop

### Tuesday 14<sup>th</sup> January

- Year 5 Olive class assembly, 2.45pm at school

### Wednesday 15<sup>th</sup> January

- **Deadline** for applications to join Reception in September 2025
- Coffee Morning for Nursery and Reception parents and carers, 9am at school

## Message from the Headteacher

Dear Parents and Carers,

We have had a fantastically festive last week of the autumn term and 2024 with two nativity performances, a carol concert, an appreciation lunch for all of our wonderful support staff, the finals of Churchfields's Got Talent and the week was topped off by the children's Christmas lunch today. Thank you for all your support and loud clapping and cheering this week – it makes the children's day. On behalf of the whole staff team, I wish you a happy, healthy and peaceful holiday and we look forward to seeing you all in 2024!

Sarah Atherton  
Headteacher





## Churchfields Brings Festive Cheer to the Community

Our school council created some imaginative Christmas decorations using empty cardboard toilet roll and offcuts of paper. The decorations are now up on display in Elmers End train station bringing a little bit of cheer to the morning commute!



## Extra-Curricular Clubs Spring 2025 - Places Available

### Spring 2025 Extracurricular After school club Timetable

	Club	Year Group	Start time	Finish time	Pick up / Drop off point
Monday	Churchfields Football Team practice	Year 5 - 6	08:00	Straight to class	Nursery Gate
	Chaos Art Club	R - Year 6	After school	16:30	Palm class entrance
	EWTB Football Club - Years 1 - 6	Year 1 - 6	After school	16:30	Nursery Gate
	<b>NEW</b> Lorna's Tennis	Year 1 - 6	After school	16:15	Nursery Gate
	Spotlights - Musical Theatre	R - Year 2	After school	16:45	Outside the office
Tuesday	Prostars Girls only football - Morning club	Year 3 - 6	08:00	Straight to class	Nursery Gate
	Inkhead - creative Writing	Year 3 - 6	After school	16:30	Outside the office
	Churchfields Choir	Year 3 - 6	After school	16:30	Outside the office
Wednesday	Premier Chess Coaching - Morning club	R - Year 6	08:00	Straight to class	Drop off office
	EWTB Coaching - Multisports	Year 1 - 6	After school	16:30	Nursery Gate
	EWTB Football Club - Reception only	R	After school	16:30	Nursery Gate
	<b>NEW</b> Lorna's Tennis	Year 1 - 6	After school	16:15	Nursery Gate
	<b>NEW</b> Wildlife Wonders - 6 weeks only	Ages 6 - 11 years	After school	16:30	Outside the office
Thursday	Churchfields Football Team practice	Year 5 - 6	08:00	Straight to class	Nursery Gate
	Prostars Football	R - Year 6	After school	16:30	Nursery Gate
	<b>NEW</b> London Ballet Company - Dance Club	Year 1 - 6	After school	16:20	Outside the office
	EWTB Coaching Basketball	Year 2 - 6	After school	16:30	Black gates at the Office
Friday	J'aimes Gymnastics lunchtime club	R - Year 3	12:15	12:45	N/A
	J'aimes Gymnastics	R - Year 6	After school	16:30	Outside the office
	Inkhead - creative Writing	Years 4 - 6	After school	16:30	Palm Class entrance

A number of the clubs still have spaces available – please follow the links on our website to book

<https://www.churchfields-q1e.org.uk/for-our-parentscarers/extra-curricular-clubs/>



## What a Talented Bunch!



Children from Years 2 – 6 gathered in the Main Hall yesterday afternoon for the exciting finale of Churchfields's Got Talent 2024.

There were amazing talents on display including magic, mime, singing, dancing, drama, Irish dancing and playing instruments. The children were a fantastic audience for the bold performers and the judges had a hard task to choose just one winning act.

The organising committee thanked every child who took part for their bravery and effort and we must say they did a great job in organising the competition in their spare time and also running the show in their gold and black sequin jackets.

The overall winners were 'The Dynamite Divas' from Year 5 with their very well-choreographed and rehearsed dance routine – congratulations!





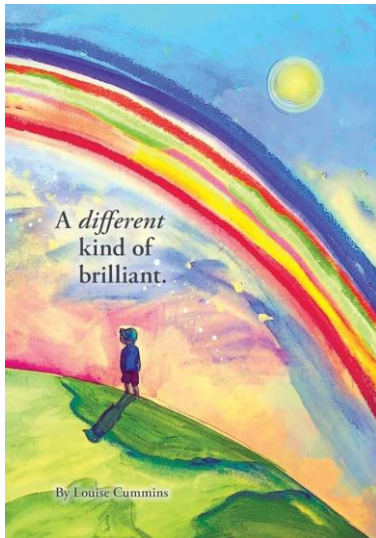
## Year 6 History Day

Year 6 have rounded off their World War 2 history topic with a theme day with dressing up, code cracking and artwork!

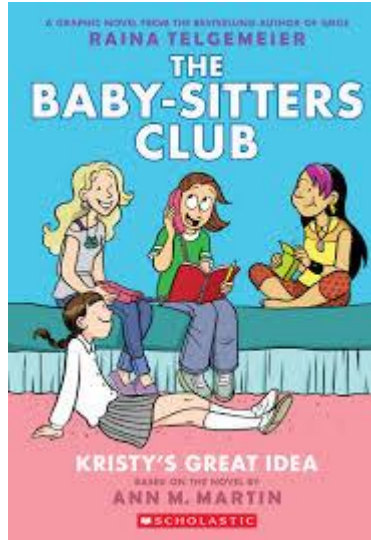




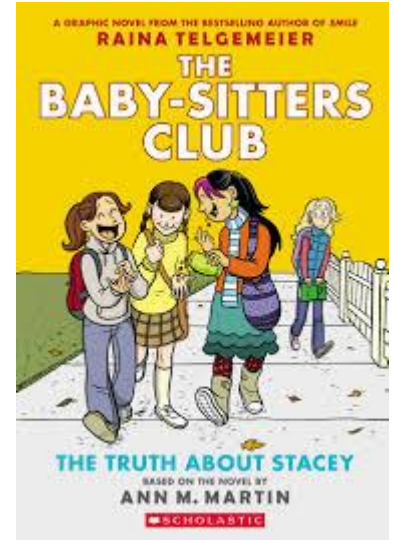
## Birthday Book Donations



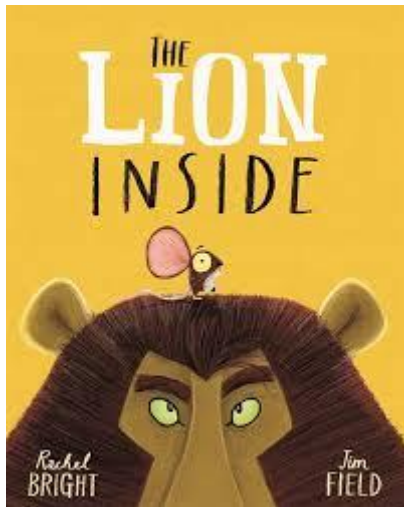
Oliver



Bella



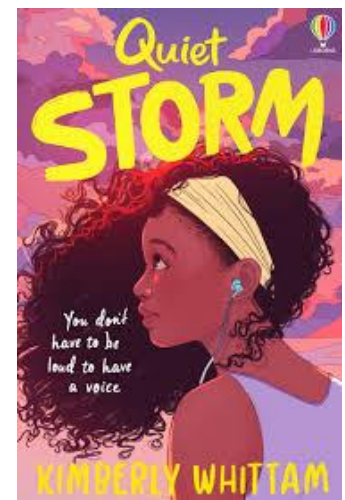
Bella



Victoria



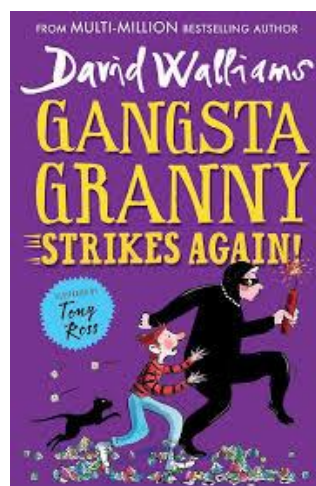
Nara



Anaia



Anaia



Anaia

A bumper crop of birthday books – thank you so much and a very happy birthday to all of these children!



## Class Assemblies 2024/25

Class assemblies will be held in the school's Main Hall, starting promptly at 2.45pm.

### Spring Term

14.01.25	Year 5 Olive
21.01.25	Year 5 Cypress
28.01.25	Year 5 Cherry
04.02.25	Year 4 Aspen
04.03.25	Year 4 Hazel
11.03.25	Year 4 Sycamore
18.03.25	Year 3 Poplar
25.03.25	Year 3 Sumac

### Summer Term

06.05.25	Year 2 Hickory
13.05.25	Year 2 Maple
10.06.25	Year 1 Rowan
17.06.25	Year 1 Silver Birch
24.06.25	Reception Palm
01.07.25	Reception Beech

## Open Classrooms 2024/25

Come along to the classroom at 2.45pm so the children can show off their learning and work.

### Spring term

22.01.25	Reception
27.01.25	Year 1
29.01.25	Year 2
30.01.25	Year 3
03.02.25	Year 5
05.02.25	Year 4
06.02.25	Year 6

### Summer Term

05.06.25	Year 6
09.06.25	Reception
12.06.25	Year 1
16.06.25	Year 2
18.06.25	Year 3
19.06.25	Year 4
23.06.25	Year 5

Apple class, ARC Holly and ARC Magnolia will write to you separately about when the children will share their learning with you.

## Parent/Carer Evenings 2024/25

### Spring term

Wednesday 12<sup>th</sup> February, 3.45 – 6.30pm  
Thursday 13<sup>th</sup> February, 3.45 – 6.30pm

### Summer term

Wednesday 16<sup>th</sup> July, 3.45 – 5.30pm

*Please note – in the summer term you will receive your child's end of year report before the parent/carers evening.*

## Special Events 2024/25

- World Book day: Thursday 6<sup>th</sup> March
- Churchfields Culture Celebration Week: Monday 31<sup>st</sup> March – Friday 4<sup>th</sup> April
- Sports days on school field:
  - Reception, Year 1, Year 2 and ARC Holly on Friday 23<sup>rd</sup> May, 9 – 11am
  - Year 3, Year 4, Year 5, Year 6 and ARC Magnolia on Friday 13<sup>th</sup> June, 9 – 11am



We are part of the Penge School Uniform Hub

## Penge School Uniform Hub



**Save money and the planet: buy preloved uniform!**

**Sense charity shop,  
104 High Street, Penge  
(next to the Post Office)**

General uniform suitable for all schools available, as well as specifics for Alexandra, St John's and Churchfields Schools, with more coming soon!

Open Mon-Sat 9am-5pm,  
Sun 10am-4pm

Organised by Alexandra Junior School PTFA.  
For more info, contact: [treasurer@ajsptfa.org.uk](mailto:treasurer@ajsptfa.org.uk)  
Supported by Penge BID



### Penge School Uniform Hub!

Pre-loved Churchfields school uniform in sizes age 2 to 15 is now available 7 days a week from the Sense charity shop on Penge High Street. 100s of items in stock - so much it won't all fit on the shop floor, so please ask if you cannot find the size you need. **Dresses, skirts, trousers, shorts, jumpers and cardigans all £1. Polos shirts 50p.** This new collaboration between Sense Penge and multiple local primary schools means that parents now have a single one-stop-shop to find affordable second-hand school uniform for their primary age children.  
All proceeds to the Sense charity.



# Churchfields News



Quality First  
Education Trust

Churchfields Road, Beckenham, Kent, BR3 4QY Tel: 020 86505247

## Term Dates 2024/25

Autumn Term 2024	<b>Monday 2<sup>nd</sup> September 2024</b>	<b>INSET – school closed to children</b>
	<b>Tuesday 3<sup>rd</sup> September 2024</b>	<b>INSET – school closed to children</b>
	Wednesday 4 <sup>th</sup> September 2024	Children's first day back – Autumn 1
	Friday 25 <sup>th</sup> October 2024	Last day of Autumn 1
	<b>Monday 28<sup>th</sup> October to Friday 1<sup>st</sup> November 2024</b>	<b>Half Term Holidays</b>
	<b>Monday 4<sup>th</sup> November 2024</b>	<b>INSET – school closed to children</b>
	Tuesday 5 <sup>th</sup> November 2024	Children's first day back – Autumn 2
	Friday 20 <sup>th</sup> December 2024	Last day of Autumn 2
	<b>Monday 23<sup>rd</sup> December 2024 to Friday 3<sup>rd</sup> January 2025</b>	<b>Holidays</b>
Spring Term 2025	<b>Monday 6<sup>th</sup> January 2025</b>	<b>INSET – school closed to children</b>
	Tuesday 7 <sup>th</sup> January 2025	Children's first day back – Spring 1
	Friday 14 <sup>th</sup> February 2025	Last day of Spring 1
	<b>Monday 17<sup>th</sup> to Friday 21<sup>st</sup> February 2025</b>	<b>Half Term Holidays</b>
	Monday 24 <sup>th</sup> February 2025	Children's first day back – Spring 2
	Friday 4 <sup>th</sup> April 2025	Last day of Spring 2
	<b>Monday 7<sup>th</sup> April to Monday 21<sup>st</sup> April 2025</b>	<b>Holidays</b>
Summer Term 2025	<b>Tuesday 22<sup>nd</sup> April 2025</b>	<b>INSET – school closed to children</b>
	Wednesday 23 <sup>rd</sup> April 2025	Children's first day back – Summer 1
	<b>Monday 5<sup>th</sup> May 2025</b>	<b>School closed – Bank Holiday</b>
	Friday 23 <sup>rd</sup> May 2025	Last day of Summer 1
	<b>Monday 26<sup>th</sup> to Friday 30<sup>th</sup> May 2025</b>	<b>Half Term Holidays</b>
	Monday 2 <sup>nd</sup> June 2025	Children's first day back – Summer 2
	Tuesday 22 <sup>nd</sup> July 2025	Last day of Summer 2 – <b>finish at 1.30pm, After School Club until 4pm</b>





# Churchfields News



Quality First  
Education Trust

Churchfields Road, Beckenham, Kent, BR3 4QY Tel: 020 86505247

## Term Dates 2025/26

<b>Autumn Term 2025</b>	<b>Monday 1<sup>st</sup> September 2025</b>	<b>INSET – school closed to children</b>
	<b>Tuesday 2<sup>nd</sup> September 2025</b>	<b>INSET – school closed to children</b>
	Wednesday 3 <sup>rd</sup> September 2025	Children's first day back – Autumn 1
	Friday 24 <sup>th</sup> October 2025	Last day of Autumn 1
	<b>Monday 27<sup>th</sup> October to Friday 31<sup>st</sup> October 2025</b>	<b>Half Term Holidays</b>
	<b>Monday 3<sup>rd</sup> November 2025</b>	<b>INSET – school closed to children</b>
	Tuesday 4 <sup>th</sup> November 2025	Children's first day back – Autumn 2
	Friday 19 <sup>th</sup> December 2025	Last day of Autumn 2
	<b>Monday 22<sup>nd</sup> December 2025 to Friday 2<sup>nd</sup> January 2026</b>	<b>Holidays</b>
<b>Spring Term 2026</b>	<b>Monday 5<sup>th</sup> January 2026</b>	<b>INSET – school closed to children</b>
	Tuesday 6 <sup>th</sup> January 2026	Children's first day back – Spring 1
	Friday 13 <sup>th</sup> February 2026	Last day of Spring 1
	<b>Monday 16<sup>th</sup> to Friday 20<sup>th</sup> February 2026</b>	<b>Half Term Holidays</b>
	Monday 23 <sup>rd</sup> February 2026	Children's first day back – Spring 2
	Friday 27 <sup>th</sup> March 2026	Last day of Spring 2
	<b>Monday 30<sup>th</sup> March to Friday 10<sup>th</sup> April 2026</b>	<b>Holidays</b>
<b>Summer Term 2026</b>	<b>Monday 13<sup>th</sup> April 2026</b>	<b>INSET – school closed to children</b>
	Tuesday 14 <sup>th</sup> April 2026	Children's first day back – Summer 1
	<b>Monday 4<sup>th</sup> May 2026</b>	<b>School closed – Bank Holiday</b>
	Friday 22 <sup>nd</sup> May 2026	Last day of Summer 1
	<b>Monday 25<sup>th</sup> to Friday 29<sup>th</sup> May 2026</b>	<b>Half Term Holidays</b>
	Monday 1 <sup>st</sup> June 2026	Children's first day back – Summer 2
	Friday 17 <sup>th</sup> July 2026	Last day of Summer 2 – <b>finish at 1.30pm, After School Club until 4pm</b>