

Churchfields **Primary School**

Welcome to Churchfields



Quality First Education Trust



Welcome to Churchfields

Early Years Team



Sonia Burn



Clare Luker



Helen Jackson



Nicola Thorton



Noemi Hewitt



Katie Brindley





Early Years at Churchfields

EYFS Curriculum

Prime	Communication and Language	<ul style="list-style-type: none"> • Listening, Attention & Understanding • Speaking
	Personal, Social and Emotional Development	<ul style="list-style-type: none"> • Self-Regulation • Managing Self • Building Relationships
	Physical Development	<ul style="list-style-type: none"> • Gross Motor Skills • Fine Motor Skills
Specific	Literacy	<ul style="list-style-type: none"> • Comprehension • Word Reading • Writing
	Mathematics	<ul style="list-style-type: none"> • Number • Numerical Patterns
	Understanding the World	<ul style="list-style-type: none"> • Past and Present • People, Culture and Communities • The Natural World
	Expressive Arts and Design	<ul style="list-style-type: none"> • Creating with Materials • Being Imaginative and Expressive

Playing and Exploring
– Engagement

- Finding out and exploring
- Playing with what they know
- Being willing to 'have a go'

Active Learning
– Motivation

- Being involved and concentrating
- Keeping trying
- Enjoying achieving what they set out to do

Creating and Thinking
Critically
– Thinking

- Having their own ideas
- Making links
- Choosing ways to do things





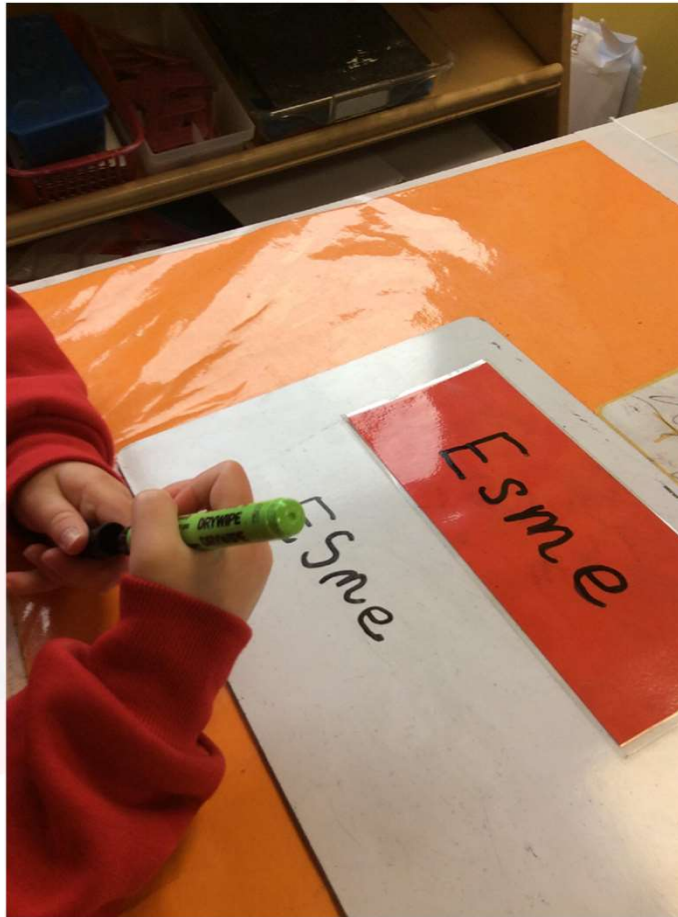
Nursery Daily Structure

- 09.00 am/ 12.30pm Settling Activities
- 09.15am/12.45pm Carpet Time
- 09.30 am/1.00pm Choosing
- 10.00 am/1.30pm Snack
- 10.15 am/1.45pm Carpet Time
- 10.30 am/2.00pm Choosing
- 11.00 am/2.30pm Carpet
- 11.15 am/2.45pm Get ready
- 11.30 am/3.00pm Lunch/Home time
- 12.00 am/3.00pm Choosing
- 12.30pm/3.30pm Inside/Home time



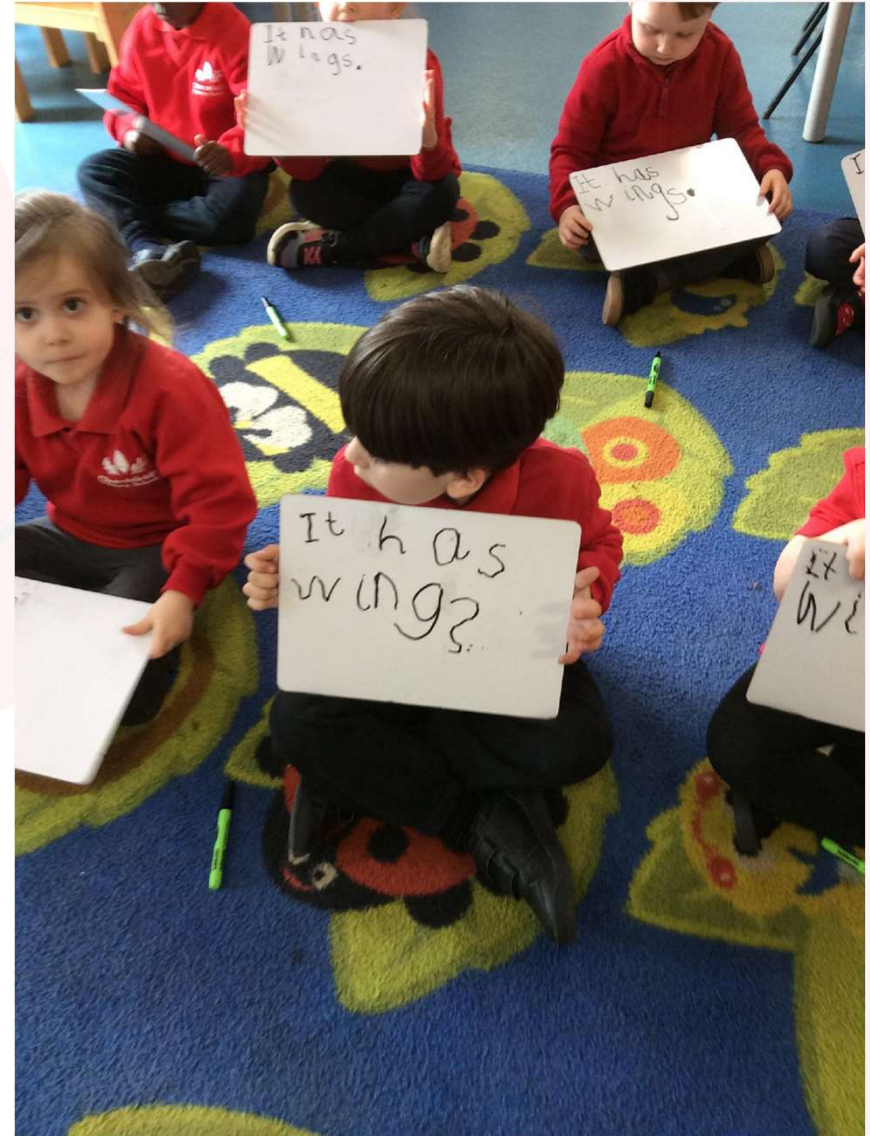
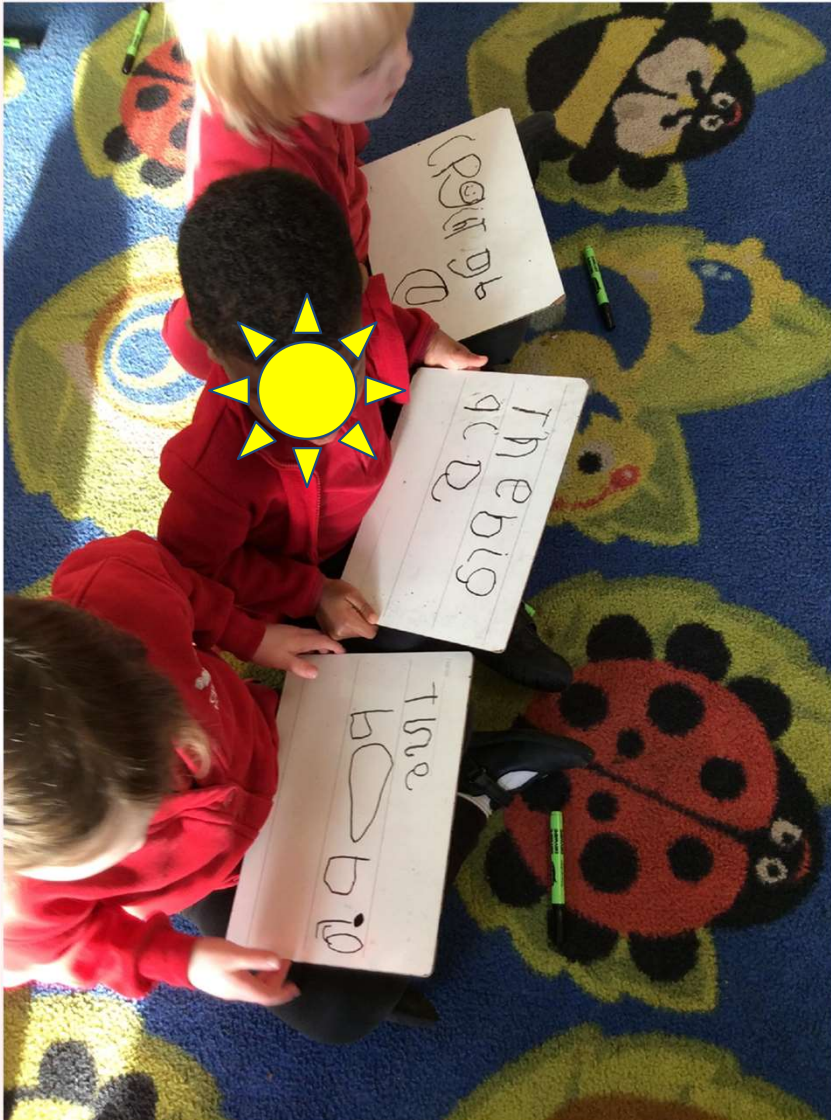


Nursery Mark Making





Nursery Mark Making





Mathematics





Independent Learning





Independent Learning





Reception Daily Structure

- 8.55am- Register and morning routine
- 9am- Handwriting and Phonics
- 10am- Literacy (Sharing Stories, linked to topic)
- 10.30am- Playtime/Snack time
- 10.45am-Maths
- 11.45am- Circle time, carpet time, topic
- 12.00pm- Lunchtime
- 1.15pm- Register
- 1.20pm- Independent Learning (child initiated learning time)
- 2.45pm- Reading Time
- 3.15pm- Home time routine and story
- 3.25pm- Home Time





Phonics

s	a	t

he ne

she she

Can you write a caption to match the pictures?

Can you use the words to learn and sounds you have learnt in your sentence?

he she qu u z v

News quick

She is a vet

03.06.25
WALT Blend and segment polysyllabic words containing oy

Read the sentences and match to the correct picture.

I enjoy seeing you.

I had an oyster for lunch.

The cowboy is strong.

My sister annoys me and she said I do not like you.

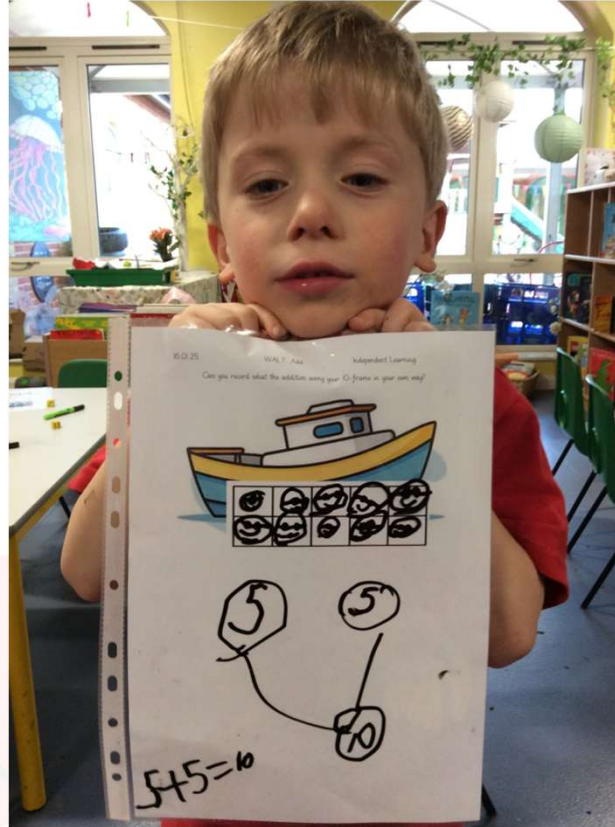
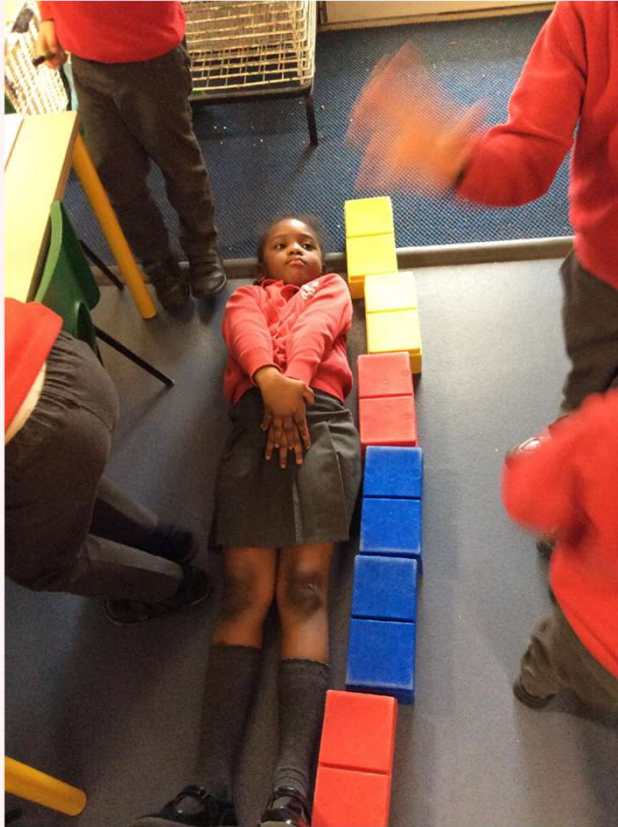
Deepening. Write your own sentences using words with the oy

I am a sister
The boy is a sheep
I am in John's class
The boy is a cow
boys





Mathematics





Independent Learning





Independent Learning









Induction Process

- **Data Collection Forms-** provides information about your child to ensure we are catering for their needs.
- **Stay and Play Sessions-** Opportunity for children and parents/carers to become more familiar with the setting and their class teacher, as well as establishing friendships prior to starting in September.
- **Home Visits-** Opportunity for class teachers to see children in their own environment and discuss your child on a 1:1 basis.





Nursery Key Dates

- Thursday Stay and Play sessions -18.06.26, 25.06.26
- September start dates- from 3rd September





Reception Key Dates

- Reception Stay and Play with parents (am and pm)- Tuesday 23rd June
- Home visits- 6th-9th July
- Stay and Play whole class without parents- Wednesday 15th July (10.15-11am)
- First day- Thursday 3rd September (9am-12pm)
- Second day- Friday 4th September (stay for lunch 1.30pm)
- First full day- Monday 7th September (8.55am-3.25pm)





Getting your child 'Nursery Ready'



- Reminder of what they do when they come in. Look at the photos. Teachers will help.
- Lining up - practise being in a line.
- Packed Lunch - get used to eating packed lunch for 20min - 30min.
- Toilet - know the drill when using the toilet by themselves, wipe, flush and wash hands.
- Bags Ready
- Happy Book - photos of family stuck on one side of A4.
- Know what to expect - behaviour, learning new things, making new friends.





Getting your Child 'School Ready'

- Independent self care (dressing/toileting)
- Supporting gross and fine motor skills
- Developing listening and concentration skills
- Encouraging to follow simple instructions containing 2 parts e.g. "get your coat and then put on your shoes"
- Supporting awareness of boundaries- foundations of consent





Nursery Uniform

- Red polo top.
- Red cardigan or jumper.
- A red fleece and/or coat.
- COLD WEATHER- Black/dark grey jogging bottoms/leggings – fleeced lining.
- WARM WEATHER - Black shorts or leggings.
- Black or white socks.
- Red, white or black hair accessories.
- Black Velcro strapped shoes.





Reception Uniform

The complete uniform list is below:

- Red polo shirt
- Red cardigan or jumper
- Red fleece/coat
- Grey trousers, skirt or pinafore dress
- Red, grey or black tights/socks
- Red, grey or black hair accessories
- Black school shoes (no trainers)

Summer options:

- Red checked dresses
- Grey shorts
- Dark sandals suitable for school

P.E. kit:

- Navy blue shorts or tracksuit trousers,
- T-shirt in House colour (as advised by the class teacher)
- Trainers
- Sweatshirt in the winter (no hoodies)



PTA second hand uniform sale
Penge Charity Shop





Churchfields PTA

New Starters Meeting





Introduction to the committee

Chair

Simon Robson-Greenaway

Secretary

Kat Sperring

Treasurer

Nicki Doyle



hello@churchfields-pta.org.uk

Secretary

Shelley Armstrong

Treasurer

Justeen Tusini

Purpose

To advance the education of pupils in the school, in particular by:

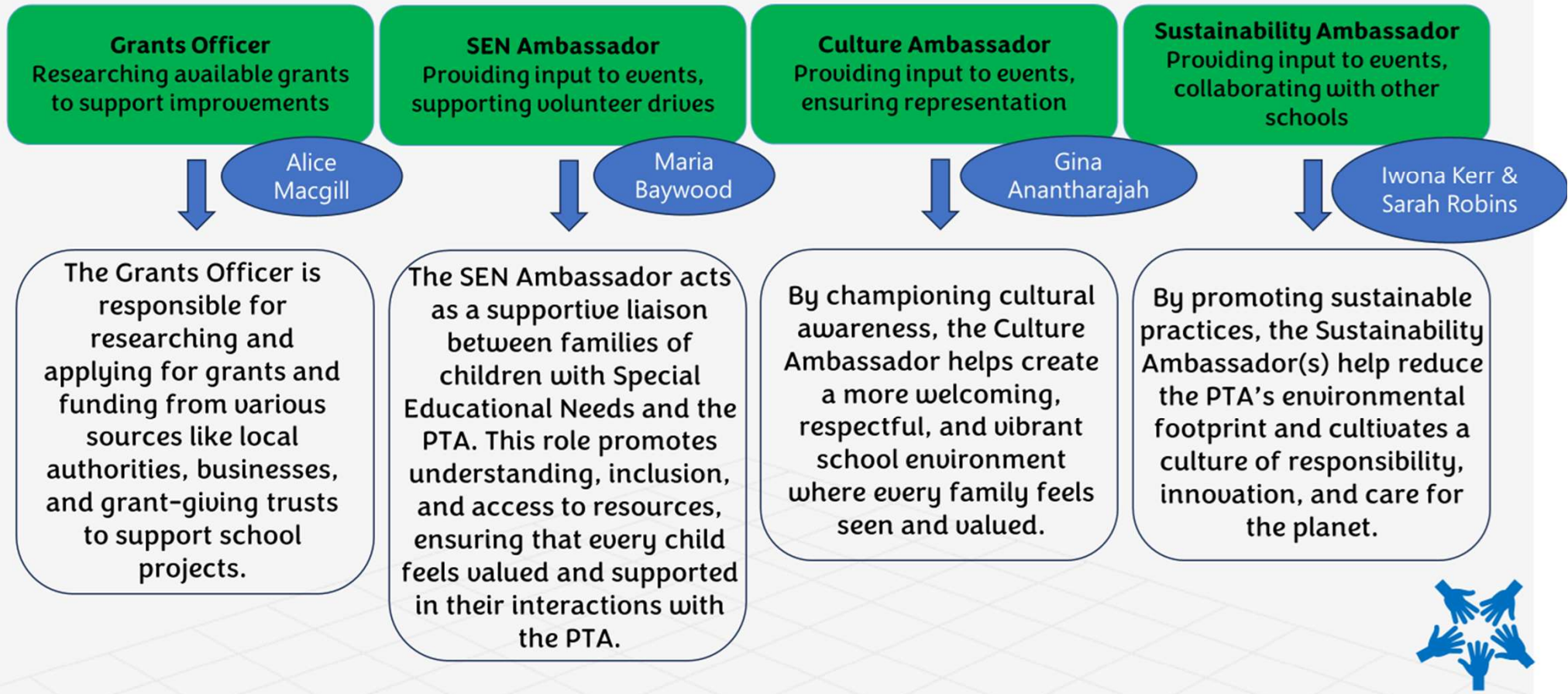
- developing effective relationships between the staff, parents, and others associated with the school
- engaging in activities or providing facilities or equipment, which support the school and advance the education of the pupils

Membership

- The parents, guardians, or carers of any pupil currently attending the school
- Teaching and non-teaching staff currently employed by the school or in any other association



Non-Committee Roles





Typical events & funded projects

Summer Fairs

Colour Run

Sponsored Read-a-Thon

Vegetable Garden

Easter Egg Hunts

Reading Books

Circus

Chromebooks

Sports Kit

Christmas Fairs

Cake Sales

World Book Day

Enhanced Seating

Discos

Personalised Lego / Culture Calendars

Culture Week

Forest School Shelter





Autumn 1 Committee Meeting
Volunteering – Events



- Volunteering for the PTA is fun and enjoyable activity that the children love to see!
 - **A sense of reward** – contributing to life in school
 - **Inspiration for your children** – our children love seeing us actively involved
 - **Connection** – build relationships, share ideas
 - **Staying engaged** – more connected to the school culture and experiences
 - **Personal growth** – enhance confidence, develop new skills
- Everything we do is volunteer-led, without our volunteers we wouldn't have a PTA





Sponsorship

- Do you work for an organisation that might like to partner with us as a sponsor?
- Our new sponsorship packages have been released!
- Fantastic opportunity to contribute to our children's future





Summer Fair 2026

- Our Summer Fair is on Saturday 27th 12-4pm
- Great opportunity to see what we do
- We'll have...
 - Inflatables
 - London Fire Brigade (subject to operational requirements)
 - Games
 - BBQ
 - Bar
 - Disco DJ
 - Ice Creams
 - ... & more

BEST BBQ IN TOWN*
* MAYBE

BEAT THE GOALIE

BAR

SUMMER FAIR 2026
SATURDAY 27TH JUNE
12-4 PM

Churchfields Primary School PTA

ICE CREAMS

INFLATABLES

AND LOADS MORE

Churchfields Rd,
Beckenham
BR3 4QY

Sponsored by:
GRAFTON





Close





General Questions

